

# MILLBURN SCHOOL DISTRICT 24

SUMMER PROJECTS 2014

**MILLBURN MIDDLE SCHOOL**

# Landscaping





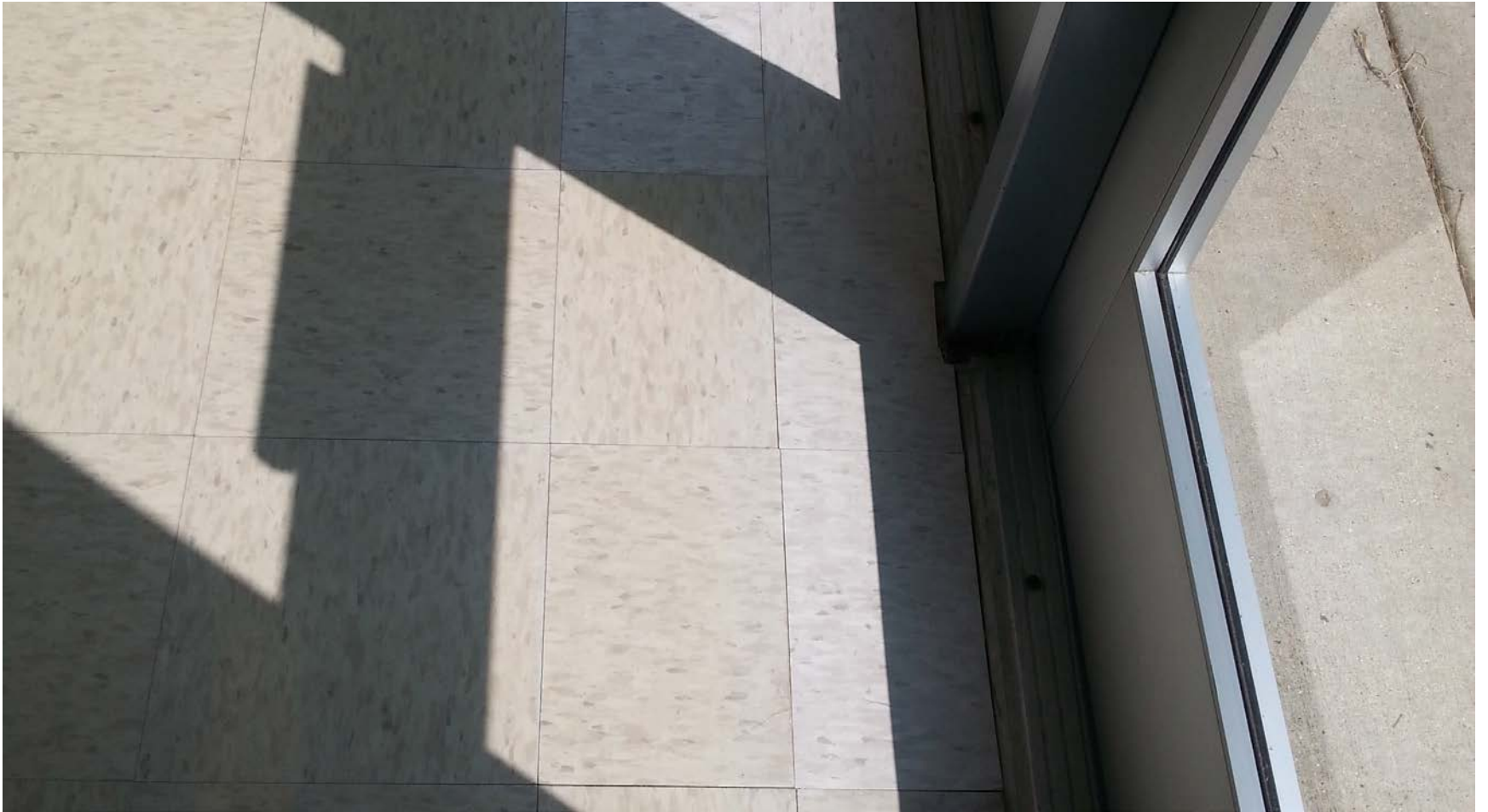
# New LED Lighting at Rear of Building



# Damaged Tile



# Tile after Repair



# Fountain before Cleaning





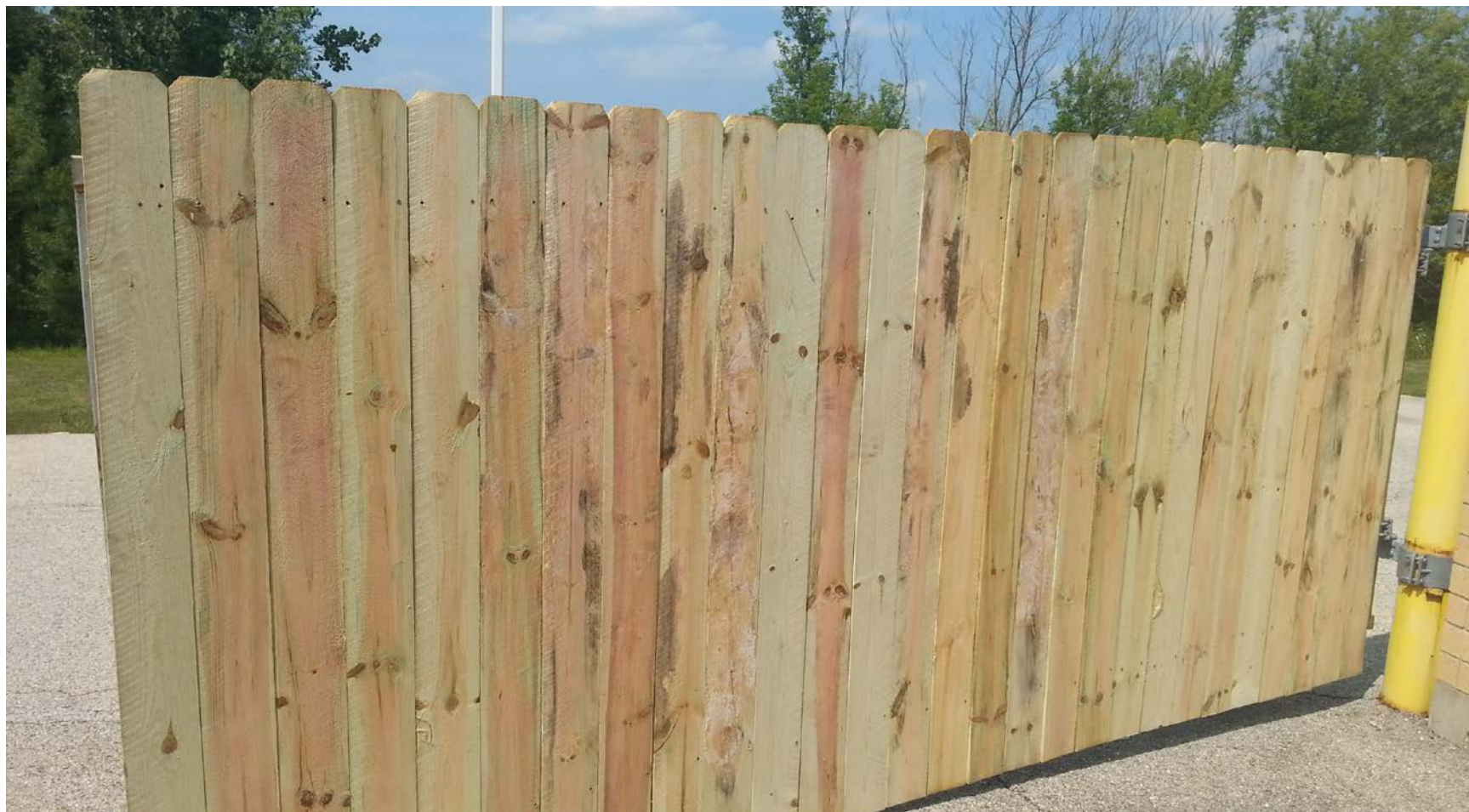
# Finished Product



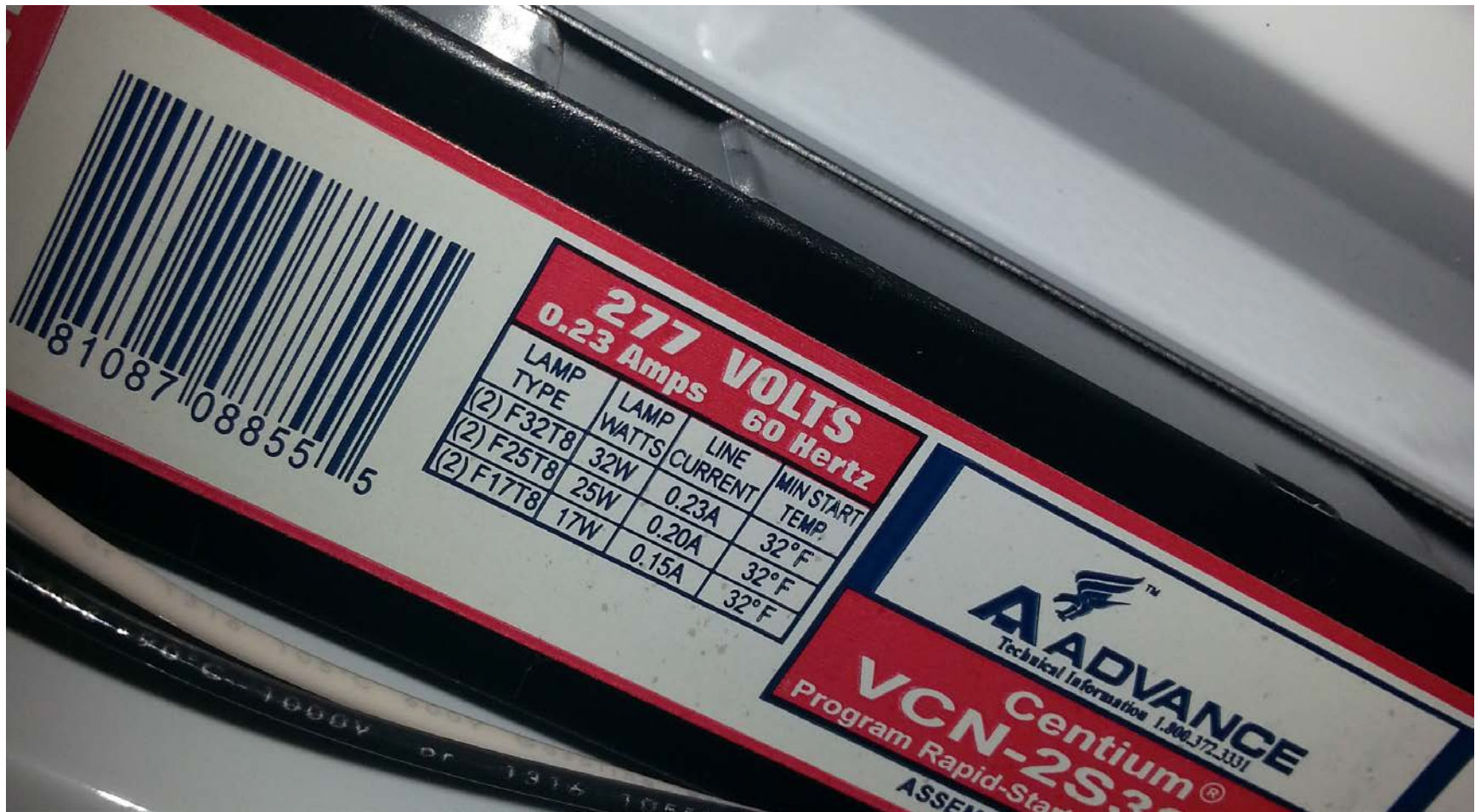
# Replaced Filters, Installed Motors in HVAC Units



# Repaired Gate



# Replaced Ballasts in Lights



# Replaced Playground Mulch



# New Chairs in Media Center



**MILLBURN ELEMENTARY SCHOOL**

# Landscaping









# Replaced Playground Mulch



# Painting













# Classroom Renovation Carpet & Paint



# Painting before Installing Markerboards to Replace Chalkboards



# Stripping Floors



# Stripped and Ready for Wax



# Replaced Counter



# Welding at Both Buildings



# New Chairs in Media Center



2014 SUMMER PROJECT UPDATE - OCTOBER 2014	SCHOOL	COMPLETED
Replace Parking Lot Signage & Posts	Both	YES
Determine which light fixtures/Ballasts need to be replaced	Both	YES
Install classroom projectors in classrooms for new teachers	Both	YES
Installation of upgraded Technology Switches	Both	YES
Replace bulbs with more energy efficient bulbs - classrooms/hallways - use light meter	Both	NO
Repaint Offices - District Labor	Both	YES
Repair/replace window screens	Both	YES
Conduct Garage Sale - excess/outdated equipment (e.g. old overhead projectors, TV's, carts)	Both	NO
Clean & organize storage areas	Both	YES
Sidewalk Replacement/Repair - Rear of Building by cafeteria	MES	NO
Pour pad for recycling dumpster & install fence enclosure	MES	NO
Painting selected classrooms	MES	YES
Explore pouring concrete spillways for detention/retention ponds	MES	NO
Replace floor tiles on stage in cafeteria - Completed, but need another solution	MES	NO
Replace light covers in west stairwell	MES	NO
Install handrail/pipe under sidewalk - Northwest Corner Entrance	MES	NO
Install Security Mirror in front entrance	MES	NO
Strip wax build-up - Hallways not completed in 2013	MES	YES
First floor classrooms - Strip many years of wax build-up	MES	NO
Have front parking lot storm sewer drains cleaned	MES	YES
Paint walls on East Gym stage & storage doors	MES	NO
Repair ceiling at East Foyer Entrance by Cafeteria - Water damage from sprinkler head	MES	YES
Repair/Paint wood signs and fencing in rear of building	MES	YES
Purchase and install Walk Pads near Chiller	MES	NO
Paint, etc... in selected classrooms - Original Building (1961)	MES	YES
Explore add'l intercom access for location other than the Office	MMS	YES
Paint Hallways	MMS	YES
Re-weld lock connections on fire lane gates	MMS	YES
Repair gates to disposal area	MMS	YES
Replace Guardrail by playground	MMS	NO
Repair/Re-build retaining wall by park next to parking lot	MMS	NO
Repair/Replace Millburn Middle School Sign / <b>rotten wood</b>	MMS	NO
Replace lighting fixtures at rear of building - look at having one switch	MMS	YES



<b>2014 SUMMER PROJECT UPDATE - OCTOBER 2014</b>	<b>SCHOOL</b>	<b>COMPLETED</b>
Replace light covers Parking lots	MMS	NO
Installation of metal switch covers	MMS	?
Install AED Cabinet near Nurse's Office	MMS	NO
Installation of 4 electric outlets in LRC	MMS	YES
Paint corridors , stairways, gymnasiums, classrooms as needed	MMS	YES
Waterhog entrance matting 10 2/2 Ft X 27 1/2 Ft. EXIT 12	MMS	YES
Install Power Saver light switch in the teacher workrooms/lounge	MMS	YES
<b>2014 SUMMER ROUTINE MAINTENANCE</b>	<b>SCHOOL</b>	
Inspect/Repair man lifts used to change lights, etc	Both	IN PROCESS
Maintenance & Repair of bleachers	Both	IN PROCESS
HVAC - Clean univents/rooftops, power wash coils, lubricate, replace belts, check wiring, & change filters	Both	YES
Replace/Repair restroom stalls	Both	YES
Clean roof drains	Both	YES
Maintenance/repair of water faucets, toilets, etc...	Both	YES
Clean/sanitize lockers and windows	Both	YES
Landscape clean-up & re-seeding of damaged lawn areas	Both	YES
Move selected classrooms and offices	Both	YES
Playground Repairs (Equipment repairs, rust on stairs, fresh top coat of mulch)	Both	YES
Touch-up painting	Both	YES
Replace ceiling tile as needed	Both	YES
Clean carpets	Both	YES
Clean all light covers	Both	YES
Lubricate cafeteria table hardware	Both	YES
Dishwasher Repair/Maintenance	Both	YES
Replace light bulbs in parking lot	Both	IN PROCESS
Inspect/Lubricate/Repair Basketball Backboard Mechanisms & Hoops	Both	YES
Wax floors	Both	YES
Replace light fixtures/ballasts as needed	Both	YES
Paint stair railings as needed	MES	YES
Lubricate Operable Walls in the Gymnasiums	MMS	?